

JAM-Boree

June 4, 2021

Sailing Instructions

This race shall be governed by the rules in the Racing Rules of Sailing, the Rules and regulations of Edgewater YC and the Rules of PHRF-SS

FLEETS

Boats will be divided into logical Divisions based on Ratings and Boat Design.

RACING FOR NON-RACERS.

This class is for skippers new to racing and want to try it, or cruisers who need an excuse to get out on their boat and navigate through the Course.

COURSES

Will be announced at the Mandatory Skippers Meeting at 0915 hrs, meeting will be within shouting distance of the flagpole

START AND FINISH

The start will be between XS and the flagpole on the Edgewater Pavilion.

10:25 hrs first warning.

There will One Race.

Order of Starts, and Course designation will be announced by Radio before the first warning and at the Skippers Meeting.

COMMUNICATIONS

Any notice WILL be emailed, texted and/or otherwise disseminated via electronic means.

Radio communications, VHF 71

Mandatory check in by Radio. VHF 71

5 minute start sequence according to RRS Appendix U will be signaled by auditory horn from shore and simulcast by radio.

TIME LIMIT

If no vessel has rounded the first mark within 90 minutes of the start, the race shall be abandoned.

If the first boat does not finish within 3 (three) hours of the first start, the race shall be abandoned.

If a boat does cross the Finish Line within 45 minutes after the first boat in their start, they will be scored in place

PROTESTS

Protest forms are available in the EYC chart room.

Protests and requests for redress or reopening shall be delivered to the EYC Protest Chair Mike Vining via electronic means within the protest time limit mvining@att.net or 216-533-3934 The protest time is 24 hours after the last boat has finished.

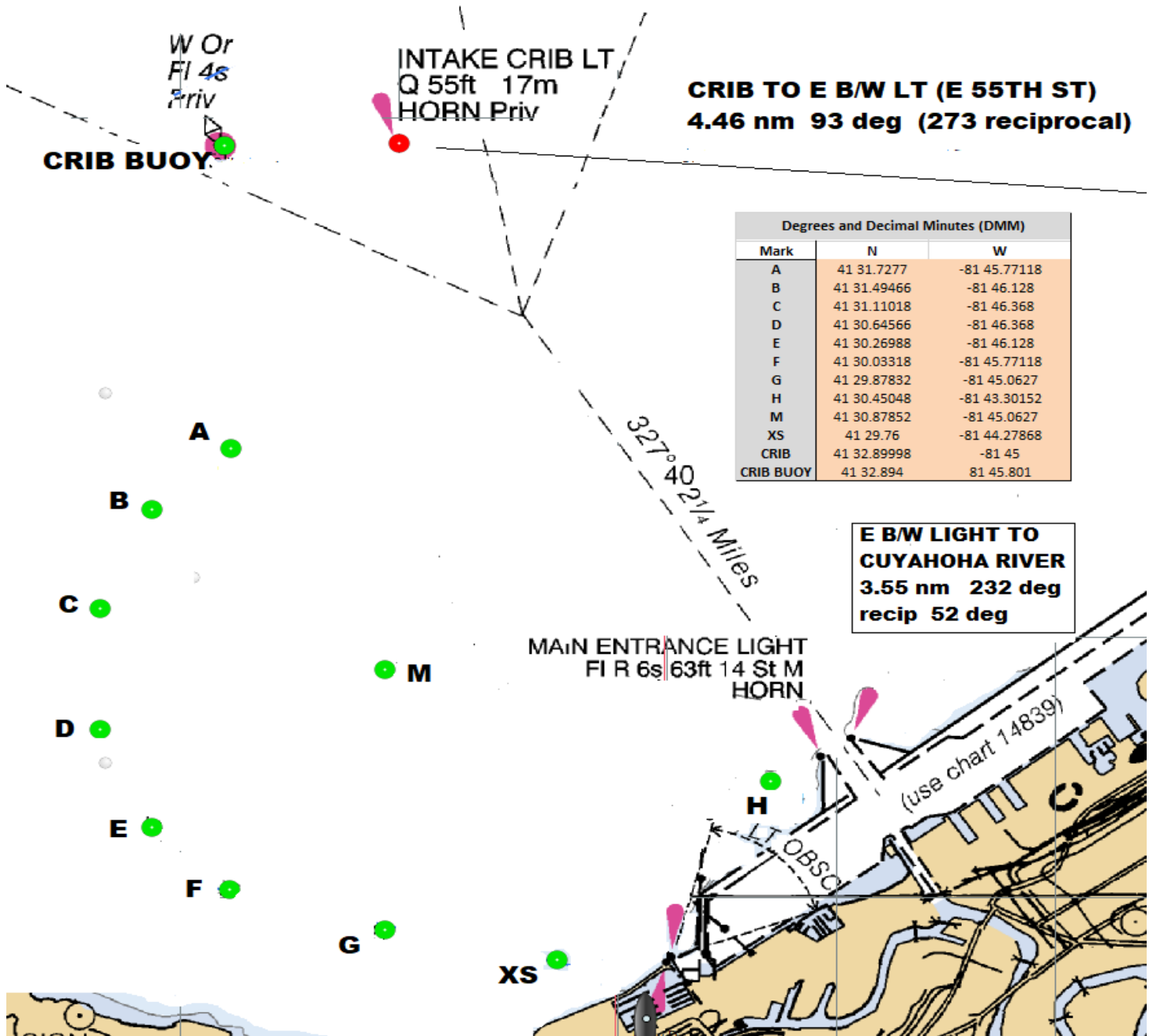
Protests will be heard via Zoom or some other means while social distancing remains in effect.

SAFETY REGULATION

All boats intending to race shall check in via radio 5 minutes prior to the first warning signal of the day.
 A boat that retires from the race shall notify the race committee as soon as possible.
 VHF Radios are mandatory for this series and must be monitored at all times while racing.

AWARDS

Awards will be presented for 1st, 2nd, and 3rd in each division.
 The Best Tie will be Awarded. (Judging is completely skewed depending on the Judges mood)



	Heading											
Mark	A	B	C	D	E	F	G	H	M	XS	CRIB	CR BUOY
A		230	215	200	190	180	165	125	150	150	25	358
B	50		205	190	180	170	155	115	130	140	30	9
C	35	25		180	170	155	140	105	105	130	30	13
D	20	10	0		155	180	130	95	75	120	25	10
E	10	0	350	335		130	115	85	55	110	20	5
F	0	350	335	325	310		105	75	30	105	10	359
G	345	335	320	310	295	285		65	0	100	0	349
H	305	295	285	275	265	255	245		290	225	335	322
M	330	310	285	255	235	210	180	110		150	0	433
XS	330	320	310	300	290	285	280	45	330		350	339
CRIB	205	210	210	205	200	190	180	155	180	170		269
CRIB BUOY	179	189	193	190	185	179	169	142	164	159	89	

	Distance										
Mark	A	B	C	D	E	F	G	H	M	XS	CRIB
A											
B	0.35										
C	0.76	0.42									
D	1.17	0.87	0.46								
E	1.48	1.23	0.86	0.42							
F	1.70	1.49	1.17	0.76	0.36						
G	1.93	1.80	1.57	1.24	0.89	0.55					
H	2.25	2.36	2.39	2.31	2.13	1.90	1.44				
M	1.00	1.01	1.01	1.01	1.00	1.00	1.00	1.39			
XS	2.26	2.22	2.07	1.80	1.48	1.15	0.60	1.01	1.26		
CRIB	1.31	1.64	2.06	2.48	2.76	2.93	3.02	2.76	2.02	3.19	
CRIB BUOY	1.47	1.42	1.83	2.29	2.64	2.86	3.07	3.08	2.09	3.34	0.60

